

# Oregon Department of **ENERGY**

Muddy Creek  
Energy Park

Notice of Intent  
Informational Meeting

July 25, 2023  
City Hall  
Brownsville, OR



5:00 PM - Meet and Greet and  
1:1 conversations with ODOE  
and Applicant

6:00 PM - Presentation

# AGENDA

---

- Public Meeting Overview
- Siting Process Overview (ODOE)
- Proposed Facility Overview (Applicant)
- Q&A Session - Comment

**Notice of Intent to  
Apply for a Site Certificate**

---

Muddy Creek Energy Park  
May 2023

Submitted to  
Oregon Energy Facility Siting Council

Prepared for  
Hanwha Q CELLS USA Corp.

Prepared by  
 TETRA TECH

# Meeting Overview

---

This informational meeting:

- Is intended to give members of the public an opportunity to learn about the proposal and provide comment on the NOI.
- Is **not** a contested case hearing, and participation in the meeting is not required to preserve issues or standing for the contested case.

Please hold all questions and comments until the Q&A session at end of the presentations.

Any person engaging disruptive behavior may be asked or required to leave the meeting.

# Oregon's Energy Facility Siting Program

---

Oversees the review, decision-making, and compliance for most large-scale energy-generating facilities and infrastructure in Oregon.

- Energy Facility Siting Council (EFSC) is final decision-making authority.
- Oregon Department of Energy (ODOE), Siting Division serves as staff to EFSC.

Consolidated process between state agencies and local government:

- Eliminates duplication, consolidates timelines, decisions, and judicial review
- Reviews proposal for compliance with applicable standards, laws, and rules.
- Provides opportunities for public participation and comment.
- Coordinates review and solicits input from reviewing agencies, local governments, and tribal governments.

# State Jurisdictional “Energy Facilities” ORS 469.300(11)(a)(D)

A solar photovoltaic power generation facility using more than:

- (i) 160 acres located on high-value farmland as defined in ORS 195.300;**
- (ii) 1,280 acres located on land that is predominantly cultivated or that, if not cultivated, is predominantly composed of soils that are in capability classes I to IV, as specified by the National Cooperative Soil Survey operated by the National Resources Conservation Service of the United States Department of Agriculture; or
- (iii) 1,920 acres located on any other land.





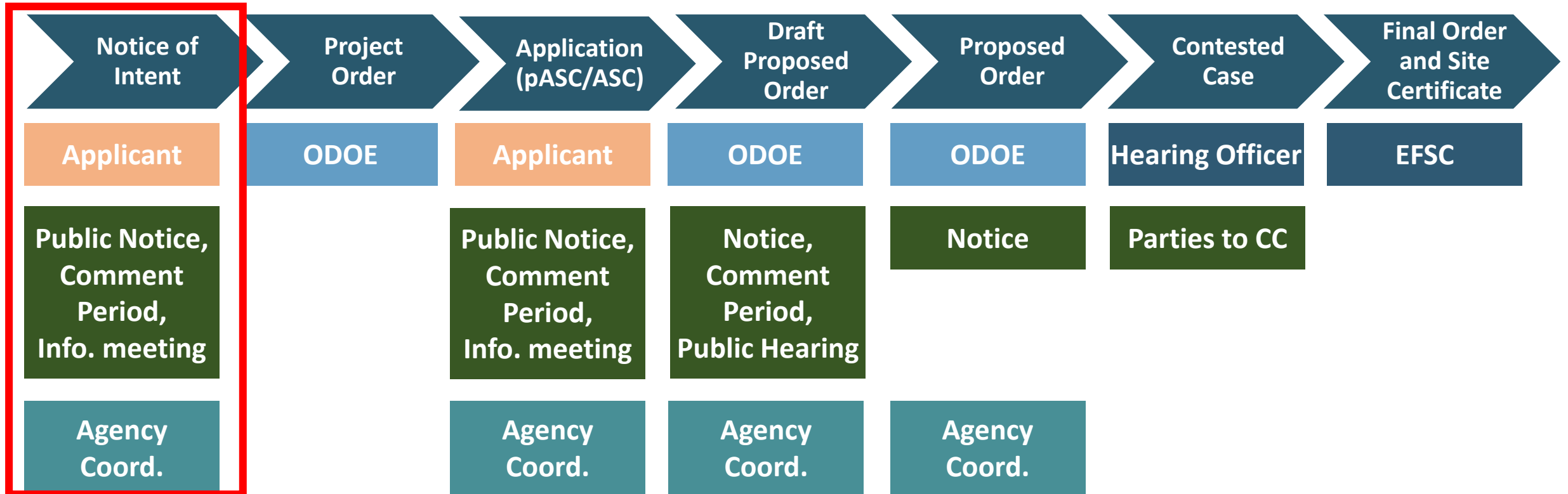
# Energy Facility Siting Process

## EFSC Siting Standards:

- General Standard of Review
- Organizational Expertise
- Structural Standard
- Soil Protection
- Land Use
- Protected Areas
- Retirement and Financial Assurance
- Fish and Wildlife Habitat
- Threatened and Endangered Species
- Scenic Resources
- Historic, Cultural and Archaeological Resources
- Recreation
- Public Services
- Waste Minimization
- Wildfire Prevention and Risk Mitigation
- Noise
- Siting Standards for Transmission Lines
- Need Standard

# ENERGY FACILITY SITING PROCESS

## Application for Site Certificate Process



WE ARE HERE

# Reviewing Agency Coordination

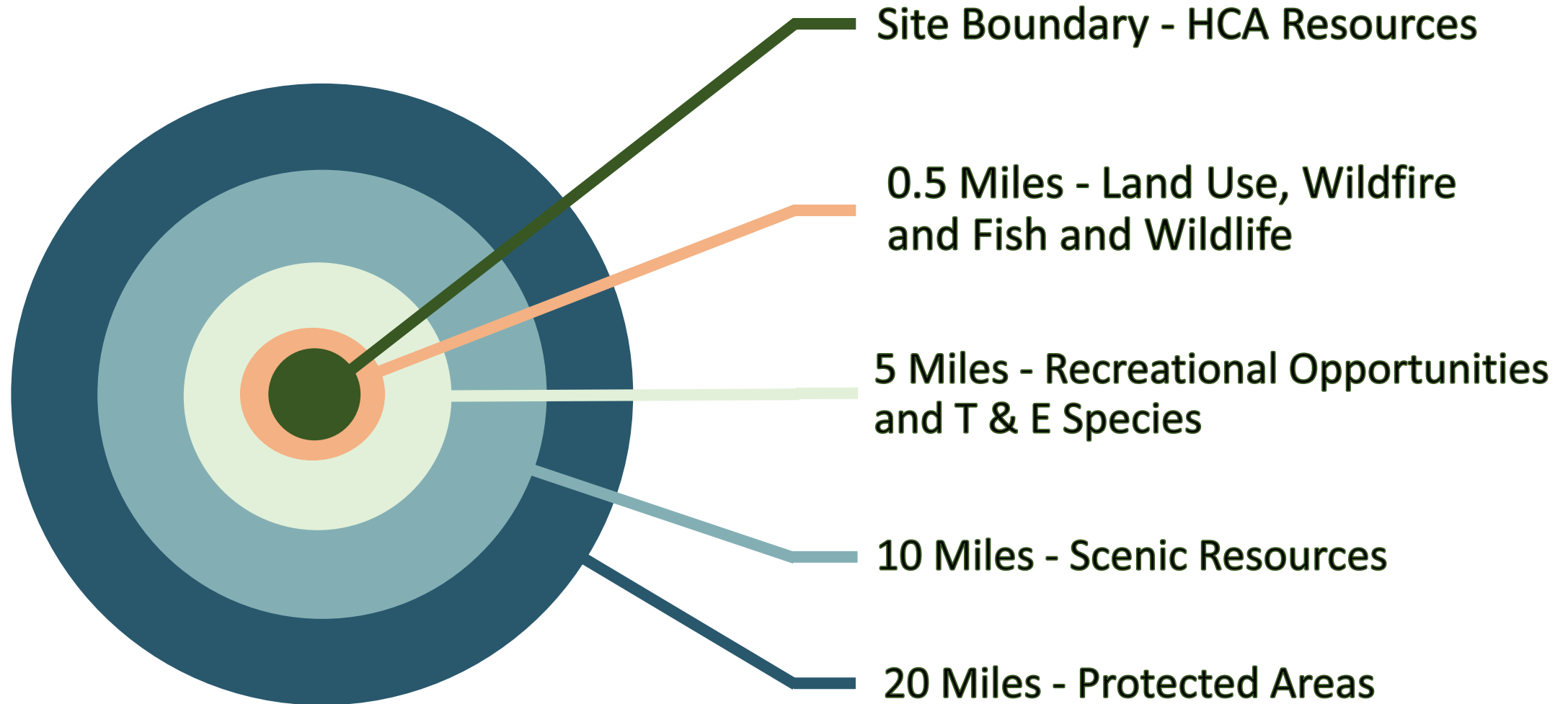
---

## **Reviewing Agencies and Special Advisory Groups:**

- Provide comments on the proposed facility within the jurisdiction or expertise of the agency
- Make recommendations regarding the size and location of analysis area(s)
- Identify:
  - Studies that should be conducted to identify potential impacts
  - Statutes, administrative rules, applicable substantive criteria, and local government ordinances administered by the agency
  - Permits administered by the agency that might apply to construction or operation of the proposed facility



# NOI Study Area Distances



# Land Use

---

- The applicant may choose to obtain land use approval from EFSC or from the affected local governments.
- NOI indicates applicant intends to seek land use determination from EFSC
- If election changes, interested persons should participate in the local land use process.

# Public Comments

---

- Opportunity for the public to comment on the Notice of Intent is Open. All written comments submitted to ODOE are included in the public record and provided to the applicant.
- Comment period closes on August 11, 2023.
- Oral Comments may be provided during the Q&A Session at this meeting.
- This meeting is not a public hearing, and participation is not required to establish standing to participate in the contested case during the review of the Application for Site Certificate.

# Q&A Session/Comments

## We will call on you

**In Person:** Please complete a comment card with your name and contact information and hand it to Erica.

**Webinar Participants:** The bottom right of the main window is a set of icons.

Click on “Participants”

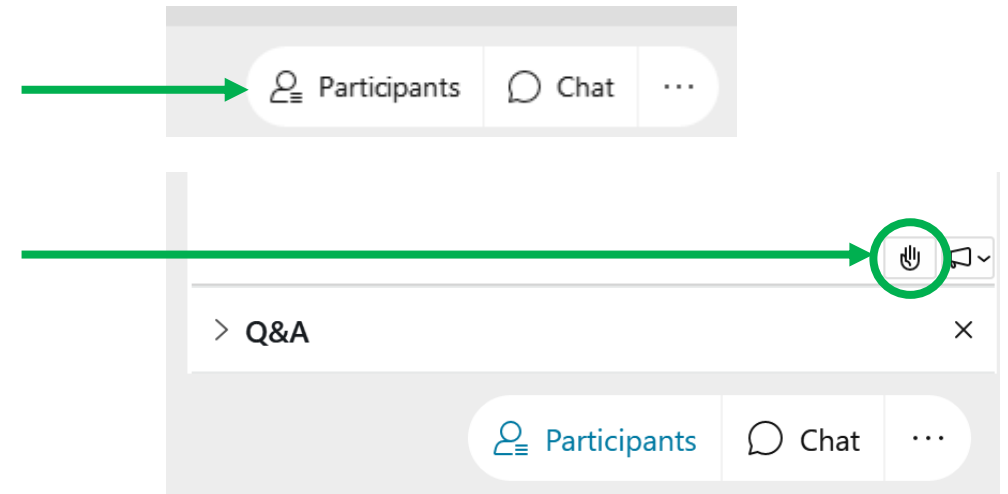
Click on the hand icon in bottom right of the participant window

Clicking on it again will lower your hand.

**Phone Participants:** We will call on you

Press \*3 on your telephone keypad to raise your hand.

Press \*3 again on your telephone keypad to lower your hand.



# Helpful Resources

Oregon Department of Energy / Energy Facilities & Safety / Facilities

## Energy Facility Siting

Home > Siting Public Comment

### Siting Public Comment

\* Required Field

#### Project Selection

Project \*

Please select the project that you are interested in commenting on

Next



#### COUNCIL INFORMATION

About the Council

Council Jurisdiction

Council Meetings

Council Rulemaking

Compliance Program



#### ENERGY FACILITIES

Public Guide

Siting Project Updates

Facilities Under EFSC

Public Comment Portal

EFSC Facilities Map

Federal Facilities in Oregon

About the Siting Process

Siting Standards

Siting Statutes & Rules

Fact Sheets



#### FACILITIES UNDER REVIEW

Archway Solar Energy Facility

Cascade Renewable Transmission System

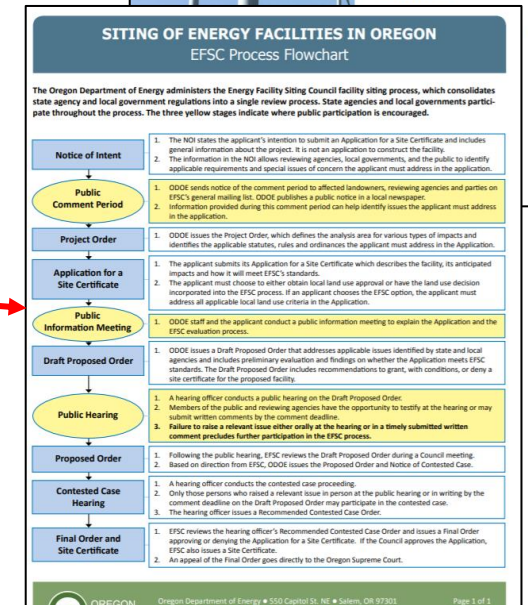
Boardman to Hemingway Transmission Line

Echo Solar Project

Eugene to Medford Transmission Line

Nolin Hills Wind Power Project

Wagon Trail Solar Project



<https://www.oregon.gov/energy/facilities-safety/Pages/default.aspx>

<https://www.oregon.gov/energy/facilities-safety/facilities/Pages/LPW.aspx>

<https://odoe.powerappsportals.us/en-US/SitingPublicComment/>

# ODOE Contact

---

Chase McVeigh-Walker, Senior Siting Analyst  
Oregon Department of Energy  
550 Capitol St. NE  
Salem, OR 97301  
(971) 600-5323

[Chase.mcveigh-walker@energy.oregon.gov](mailto:Chase.mcveigh-walker@energy.oregon.gov)



# Muddy Creek Energy Park

## Notice of Intent – Public Informational Meeting

Brian Tran, Development Manager | Qcells USA Corp.

Patrick Brown, Vice President Project Development | Qcells USA Corp.



# Agenda

- **Introductions**
- **Who is Qcells USA Corp?**
- **Facility Overview**
- **Purpose and Need**
- **Development Schedule Overview**
- **Planned Surveys**
- **Study Area Boundaries**
- **Agency and Tribal Stakeholders**
- **Questions/Discussion**

# Who is Qcells USA Corp?



**Utility-Scale Solar and Battery Storage Projects Developer**  
Develop & invest utility-scale solar plus battery energy storage system projects in North America



**Customized Engineering Procurement Construction (EPC) Services**  
Along with the module quality, the design and layout of a solar power plant are carefully calibrated



**Sustainable Reliability**  
Expertise in planning & engineering with advanced technology and high quality components



**Strong Bankability**  
Backed by Hanwha Group, Tier 1 Company, Financing Track Record, and Integrated Solar Value Chain

## Qcells USA



Office Location	— Irvine, California, United States	
Business Type	— Solar and Battery Storage Projects Development & Investment	— Electricity Sales
	— Engineering Procurement Construction Services	
Employees	— 100+ (Development/Project Finance/Construction/Project Management/Operations and Maintenance)	
History	— Founded in 2011 (Hanwha Solar Energy America Holdings)	

## Market Presence

— 2021 Top 10 Solar EPC Provider in United States

Rank	Company	MW in 2020	M/S
1	Blattner Energy	2,130	11%
2	Swinerton Renewable Energy	2,088	10%
3	Moss Construction	1,229	6%
4	Mortenson Construction	1,212	6%
5	Engie	746	4%
6	McCarthy Construction	643	3%
7	RES	566	3%
8	Signal Energy	540	3%
9	Hanwha Qcells USA	523	3%
10	Rosendin Electric	403	2%
Others		10,068	50%
Total		20,148	100%

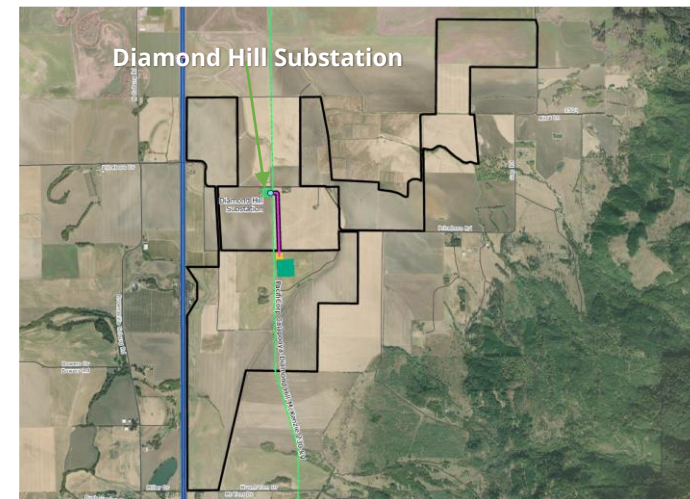
\* Source: 2021 IHS Markit report; for All Non-Residential PV Systems (>10kW)

# Muddy Creek Energy Park Details

## Facility Details

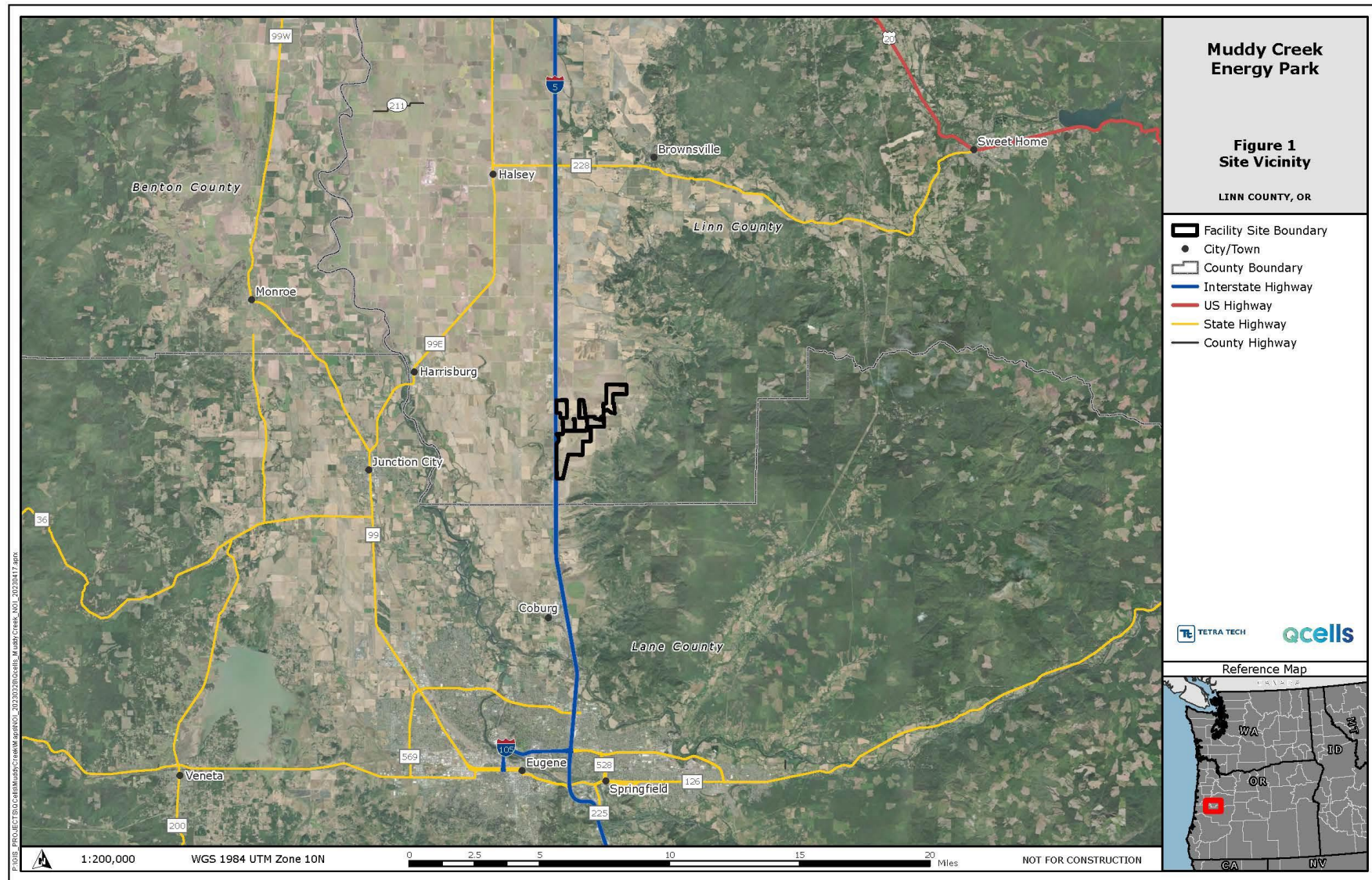
<b>Capacity</b>	<ul style="list-style-type: none"><li>• 199MW<sub>AC</sub>/ 219MW<sub>DC</sub> Solar photovoltaic system</li><li>• 199MW<sub>AC</sub> Battery Energy Storage System (BESS)</li></ul>
<b>Location</b>	<ul style="list-style-type: none"><li>• 8 miles south of Brownsville, Oregon</li><li>• Linn County, Oregon</li></ul>
<b>Facility Site Size</b>	<ul style="list-style-type: none"><li>• Facility site boundary ~ 1,588 acres</li><li>• Anticipated micrositing area ~ 1,100 acres</li></ul>
<b>Site Conditions</b>	<ul style="list-style-type: none"><li>• Existing dryland/nonirrigated ryegrass cultivation</li><li>• Local grazing</li></ul>
<b>Facility Considerations</b>	<ul style="list-style-type: none"><li>• No irrigation water rights on site</li><li>• Dual use agrivoltaics (solar/grazing) throughout Facility site</li></ul>
<b>Target Dates</b>	<ul style="list-style-type: none"><li>• Start of Construction (NTP): Q3 2025</li><li>• Commercial Operations Date: Q4 2026</li></ul>
<b>Substation</b>	<ul style="list-style-type: none"><li>• Diamond Hill, 230kV</li><li>• Direct interconnection into substation</li></ul>
<b>Interconnection</b>	<ul style="list-style-type: none"><li>• PacifiCorp</li><li>• Interconnection agreement executed</li></ul>

## Facility Location



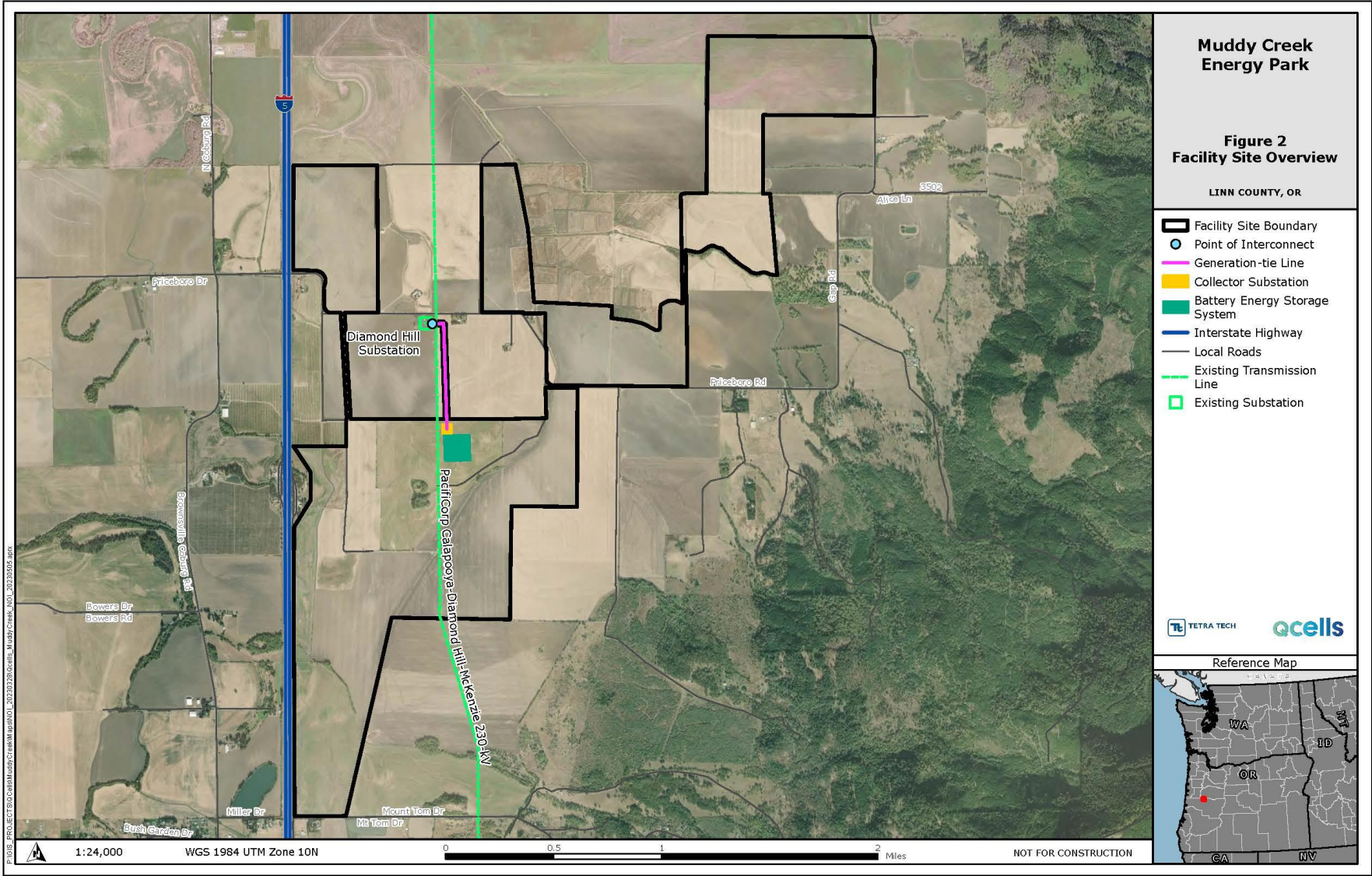


# Facility Site Location





# Facility Site Layout Overview

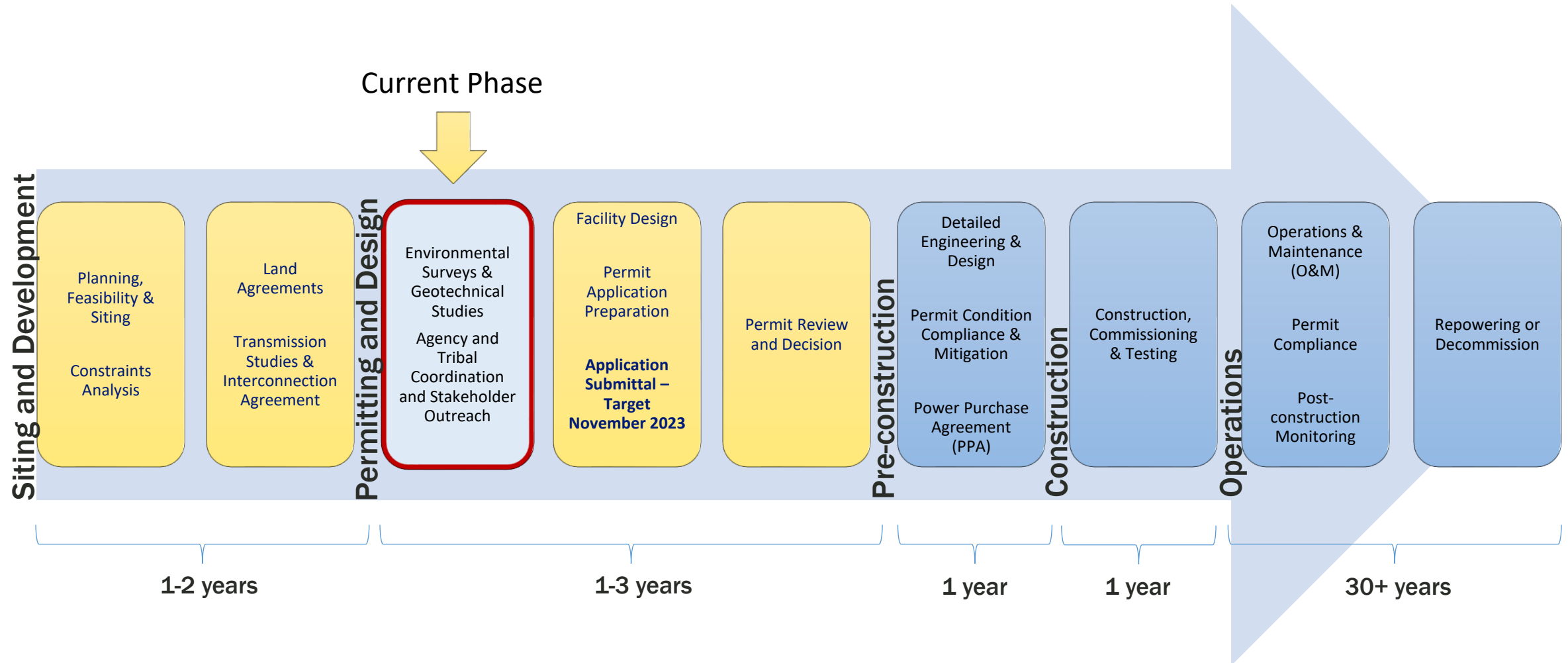




## Muddy Creek Energy Park – Purpose and Need

- › Point of interconnect (POI) to the regional electrical grid is PacifiCorp's existing Diamond Hill Substation centered in the Facility site boundary.
  - › Need for additional transmission infrastructure is minimized.
- › Proximity to existing substation keeps costs down.
- › There is a demand for the generation, west of the Cascades.
  - › The Facility will provide power for the equivalent of approximately 34,000 homes in the Willamette Valley.
- › Willing landowners make this Facility possible.
  - › They want to use their land as they see fit, while diversifying their assets, keeping land in agricultural production, and keeping the land in their families for future generations.

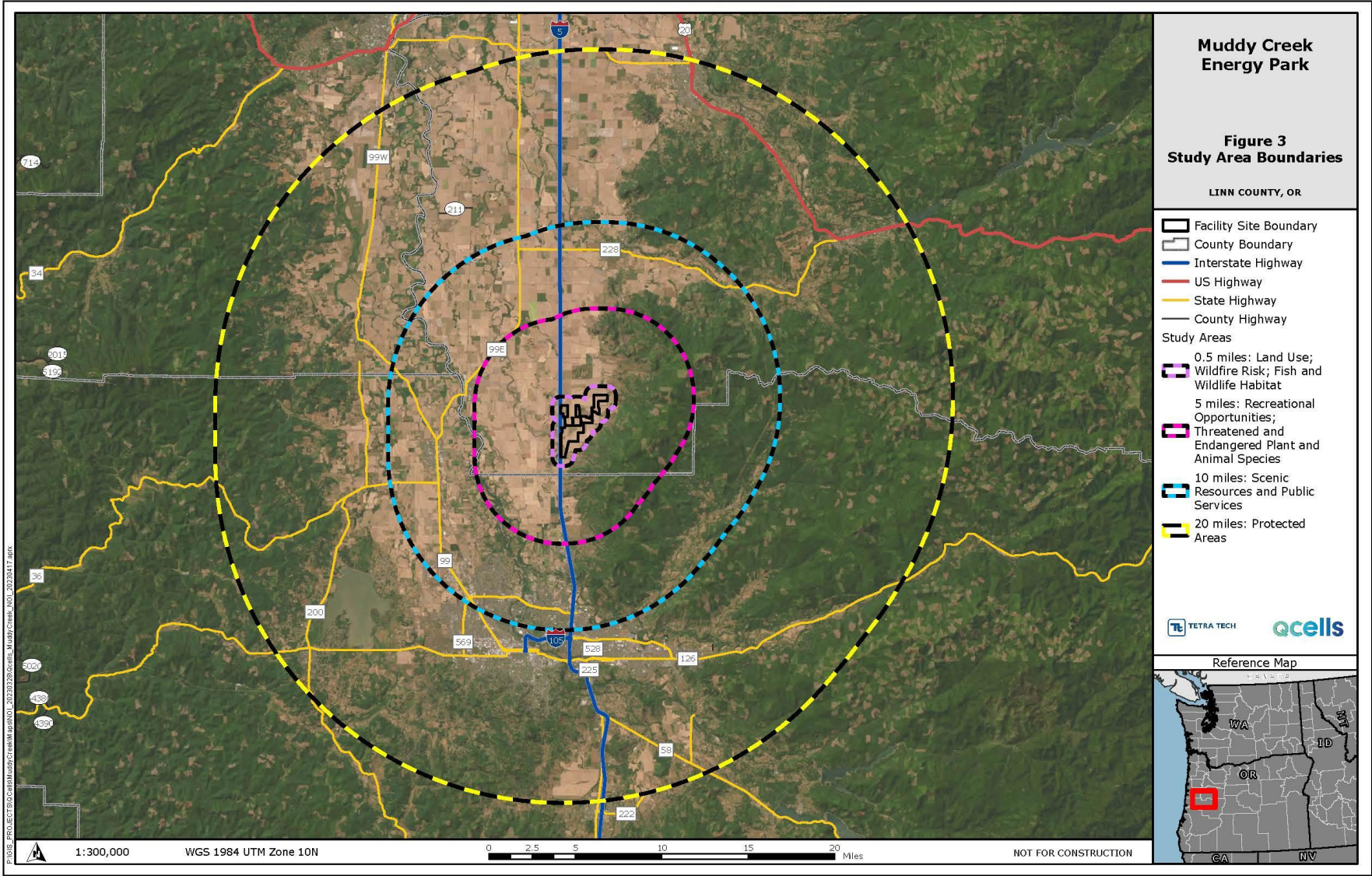
# Muddy Creek Energy Park – Development Schedule Overview



## Planned Surveys - Overview

- › General Wildlife, Special Status Species, and Habitat (May 2023)
- › Raptor Nest Survey (May 2023)
- › Rare Plant Surveys (May – August 2023)
- › Wetlands and Waters Delineation (Early Summer 2023)
- › Cultural Resources (Summer 2023)
- › Soil Assessment (Summer 2023)
- › Visual, Glare, and Acoustic Assessment (Summer 2023)

# Study Area Boundaries



# Muddy Creek Energy Park – Agency and Tribal Stakeholders

- › **Local**

- › Linn County
- › Local Fire District

- › **State**

- › Oregon Energy Facility Siting Council (EFSC)
- › Oregon Department of Fish and Wildlife (ODFW)
- › Oregon Department of State Lands (ODSL)
- › Oregon Department of Agriculture (ODA)
- › Oregon Department of Land Conservation and Development (DLCD)
- › Oregon State Historic Preservation Office (SHPO)
- › Oregon Department of Transportation (ODOT)
- › Oregon Department of Environmental Quality (ODEQ)
- › Oregon Department of Geology and Mineral Industries (DOGAMI)

- › **Tribes**

- › Confederated Tribes of Grand Ronde
- › Confederated Tribes of Siletz
- › Confederated Tribes of Warm Springs

- › **Federal**

- › U.S. Army Corps of Engineers (USACE)
- › U.S. Department of Defense (USDOD)
- › U.S. Fish and Wildlife Service (USFWS)



# Muddy Creek Energy Park – Other Stakeholders

Ongoing outreach to organizations, Linn County residents. The Facility is known publicly as Coburg Hills Solar Project. A website with public information is here: <https://coburghillsenergy.com/>

- › **Collaborating Stakeholder**

- › Dr. Chad Higgins, Oregon State University

- › **Local**

- › Officials in Linn County (local area legislators, cities/towns, county)
  - › Linn County Farm Bureau
  - › Chambers of Commerce
  - › School Districts
  - › IBEW Local 280
  - › Residents near to facility
  - › Linn County Fair

- › **State**

- › Environmental, conservation and land use groups including: Sustainable Northwest, Coalition of Oregon Land Trusts, Oregon Solar + Storage Industries Association, Community Renewable Energy Association, Renewables Northwest, 1,000 Friends of Oregon, Oregon Association of Conservation Districts, others



## Questions / Discussion